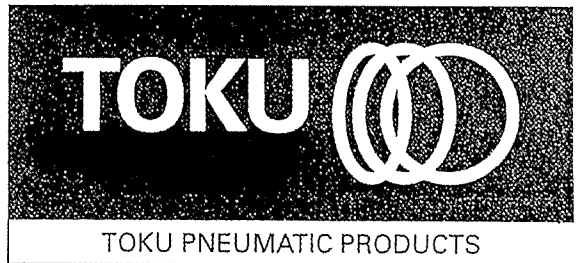
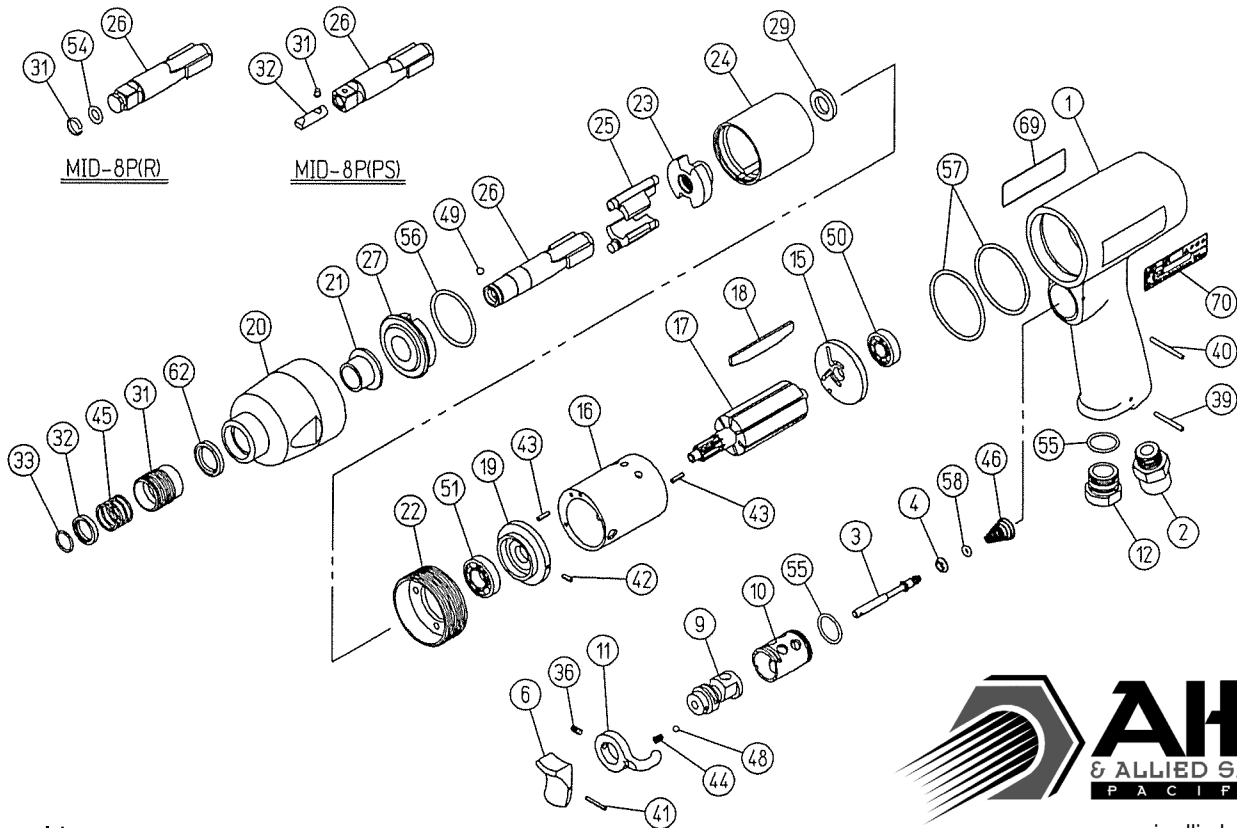


MAINTENANCE INSTRUCTIONS IMPACT DRIVER MODEL MID-8P



Exploded view



www.air-allied.com.au

Parts List

Index No.	Parts No.	Description	Q'ty Req	Index No.	Parts No.	Description	Q'ty Req
1	43-15-30-010	Motor Housing	1	39	46-97-11-200	Pin 2X20	1
2	43-15-17-84B	Air Inlet CP	1	40	46-97-11-230	Pin 2X23	1
3	43-15-30-080	Throttle Valve	1	41	13-06-01-134	Spring Pin 1.6X14	1
4	13-68-05-004	Valve Seat	1	42	13-06-02-006	Spring Pin 2X6	1
				43	13-06-02-008	Spring Pin 2X8	2
6	43-15-11-130	Trigger	1	44	13-08-09-005	Spring 3X4 (0.4)	1
				※ 45	13-08-09-003	Spring 14.3X11 (0.9)	1
9	43-15-30-210	Reverse Valve	1	46	13-08-09-013	Throttle Valve Spring	1
10	43-15-30-200	Reverse Valve Bushing	1				
11	43-15-30-230	Reverse Valve Lever	1	48	13-05-02-008	Steel Ball 1/8	1
12	13-74-03-024	Exhaust Deflector	1	※ 49	13-05-02-009	Steel Ball 9/64	1
				50	13-01-20-002	Bearing EE-2	1
15	43-15-30-370	Rear End Plate	1	51	13-01-20-003	Bearing EE-3	1
16	43-15-30-360	Liner	1				
17	43-15-24-390	Rotor	1	55	13-11-03-012	O-Ring S-14	2
18	13-71-11-012	Vane	7	56	13-11-03-022	O-Ring S-28	1
19	43-15-30-380	Front End Plate	1	57	13-11-03-335	O-Ring S-35.5	2
20	43-15-24-520	Clutch Housing	1	58	13-11-17-005	O-Ring AS568-005	1
21	43-15-11-490	Shank Bushing	1				
22	43-15-10-930	Clutch Housing Adapter	1	62	13-12-04-013	Oil Seal OS13193	1
23	43-15-21-430	Cam	1				
24	43-15-21-441	Cage	1	69	13-73-09-450	Brand Name Plate	1
25	43-15-21-450	Dog	2	70	13-73-09-453	Name Plate	1
26	43-15-30-500	Anvil Shank	1				
27	43-15-30-470	Cage Cap	1				
				MID-8P(R)			
29	43-15-24-480	Thrust Plate	1	26	43-15-23-501	Anvil Shank	1
				31	13-08-05-039	Socket Retainer	1
				54	13-08-05-038	Retainer Rubber Ring	1
31	43-15-10-940	Bit Retainer Sleeve	1				
※ 32	43-15-10-690	Bit Washer	1	MID-8P(PS)			
※ 33	13-08-02-130	Bit Ring	1	26	43-15-18-500	Anvil Shank	1
				31	43-17-33-610	Retainer Pin	1
36	13-22-03-006	Hex. Socket Set Screw M3X6	1	32	13-49-05-001	Retainer Plug	1

*Parts Marked "※" are not used on MID-8P(R), 8P(PS).